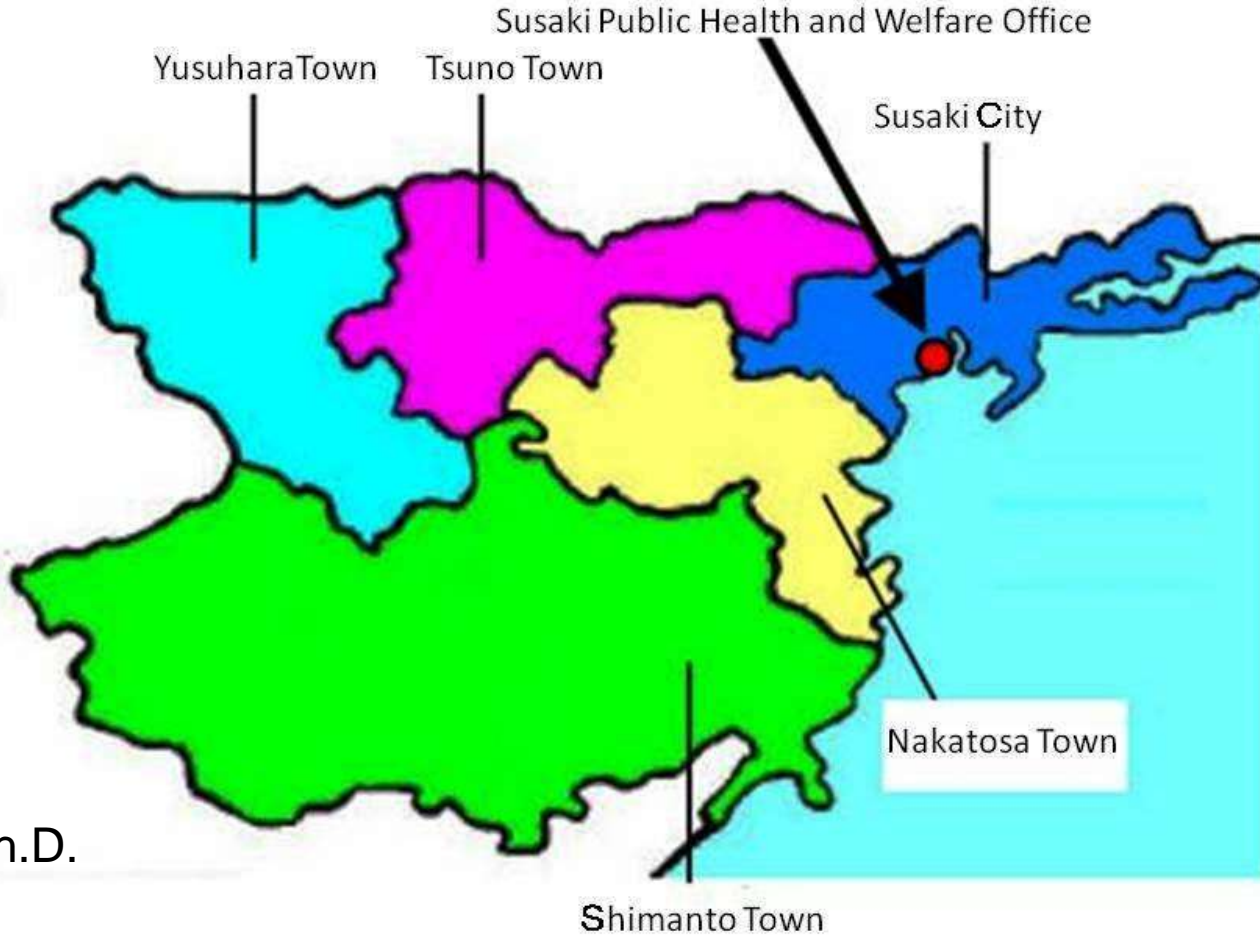


And

September 26, 2011
Susaki Public Health and Welfare Office

Healthcare and Medical Measures in
the Koban Healthcare and Medical
Area



Ichiro FUKUNAGA, M.D. Ph.D.

Susaki Public Health and Welfare Office

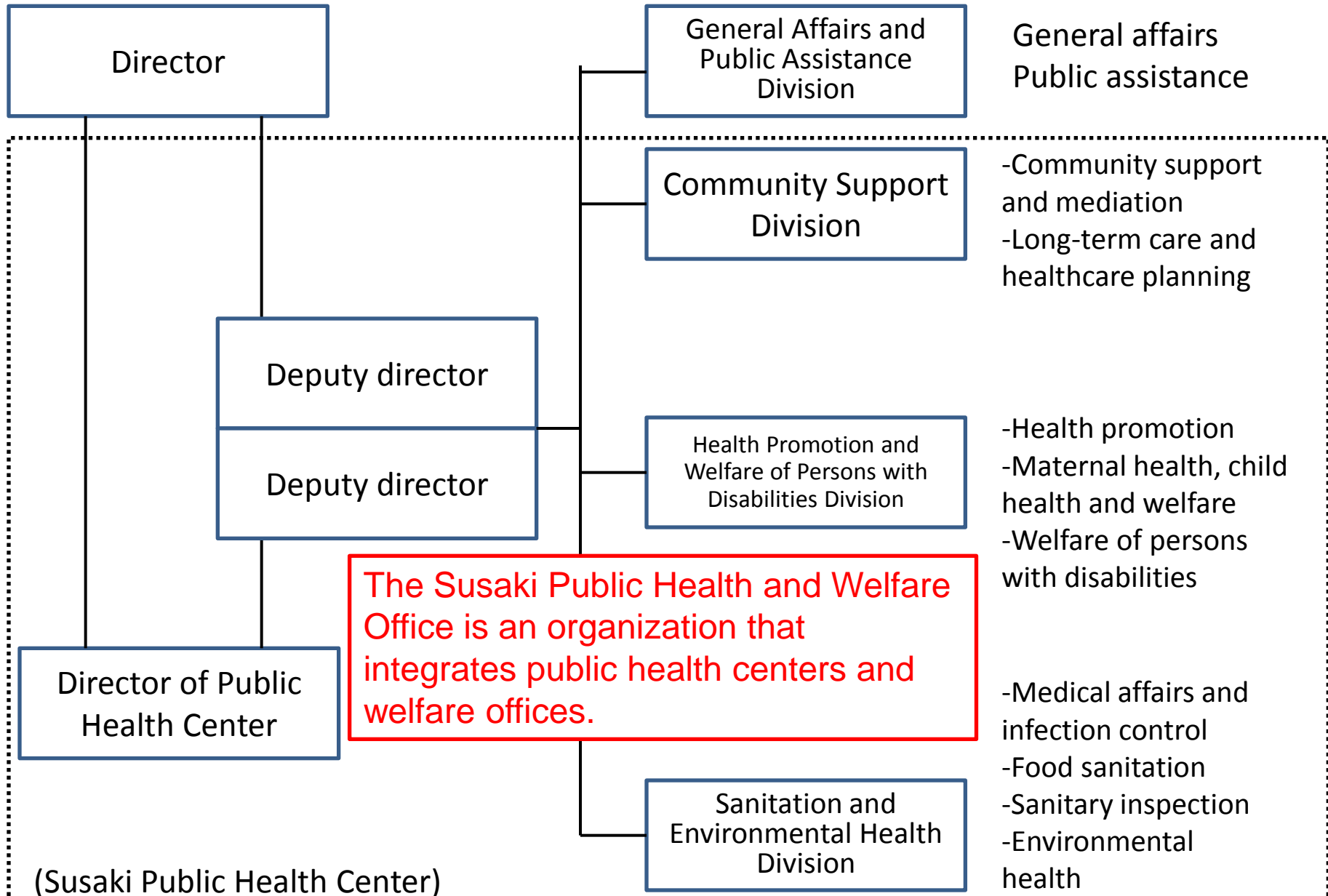


Figure 6

International Understanding of “Healthcare and Welfare”

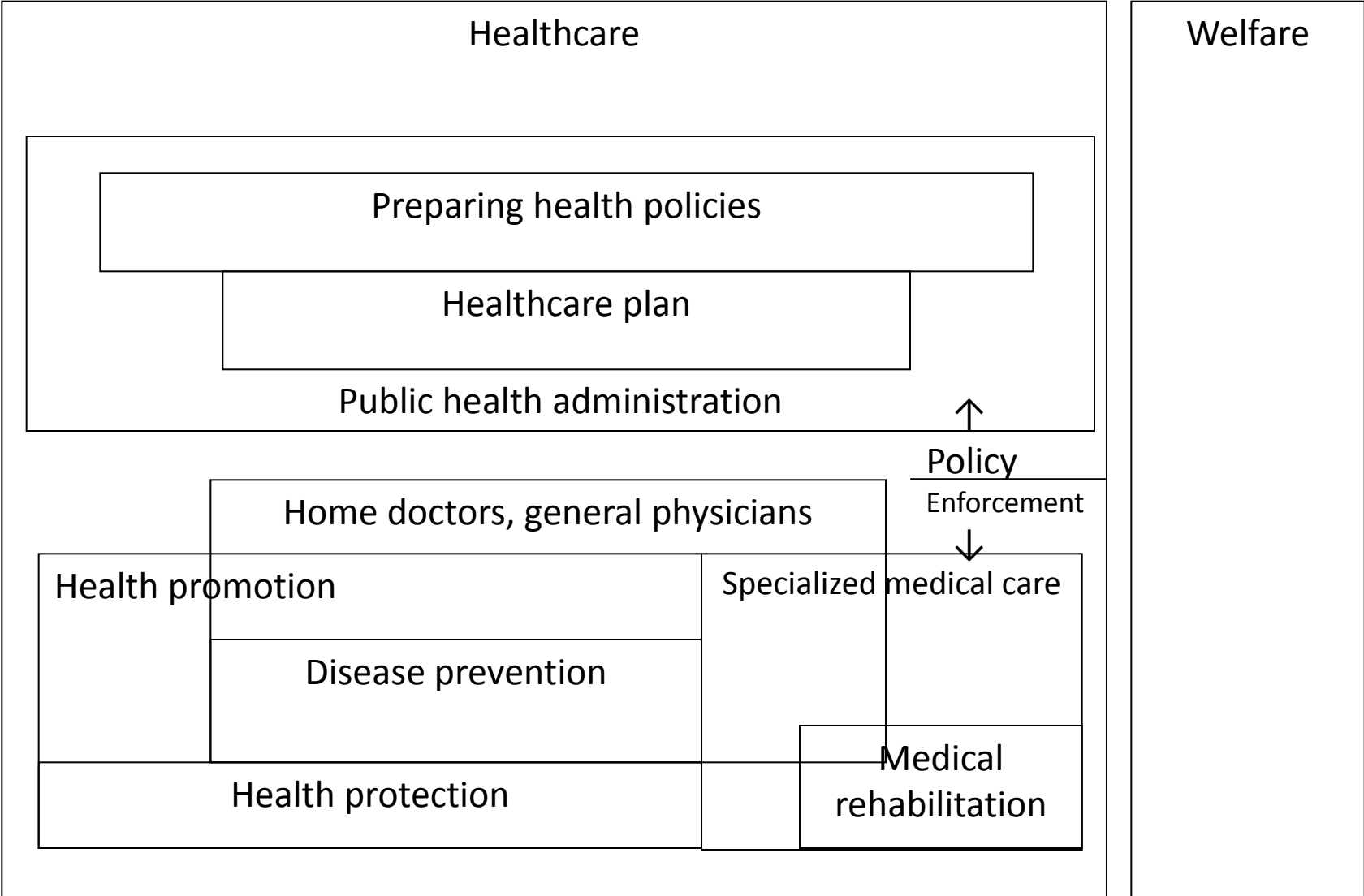


Figure 1

Healthcare and Welfare in Japan

Healthcare

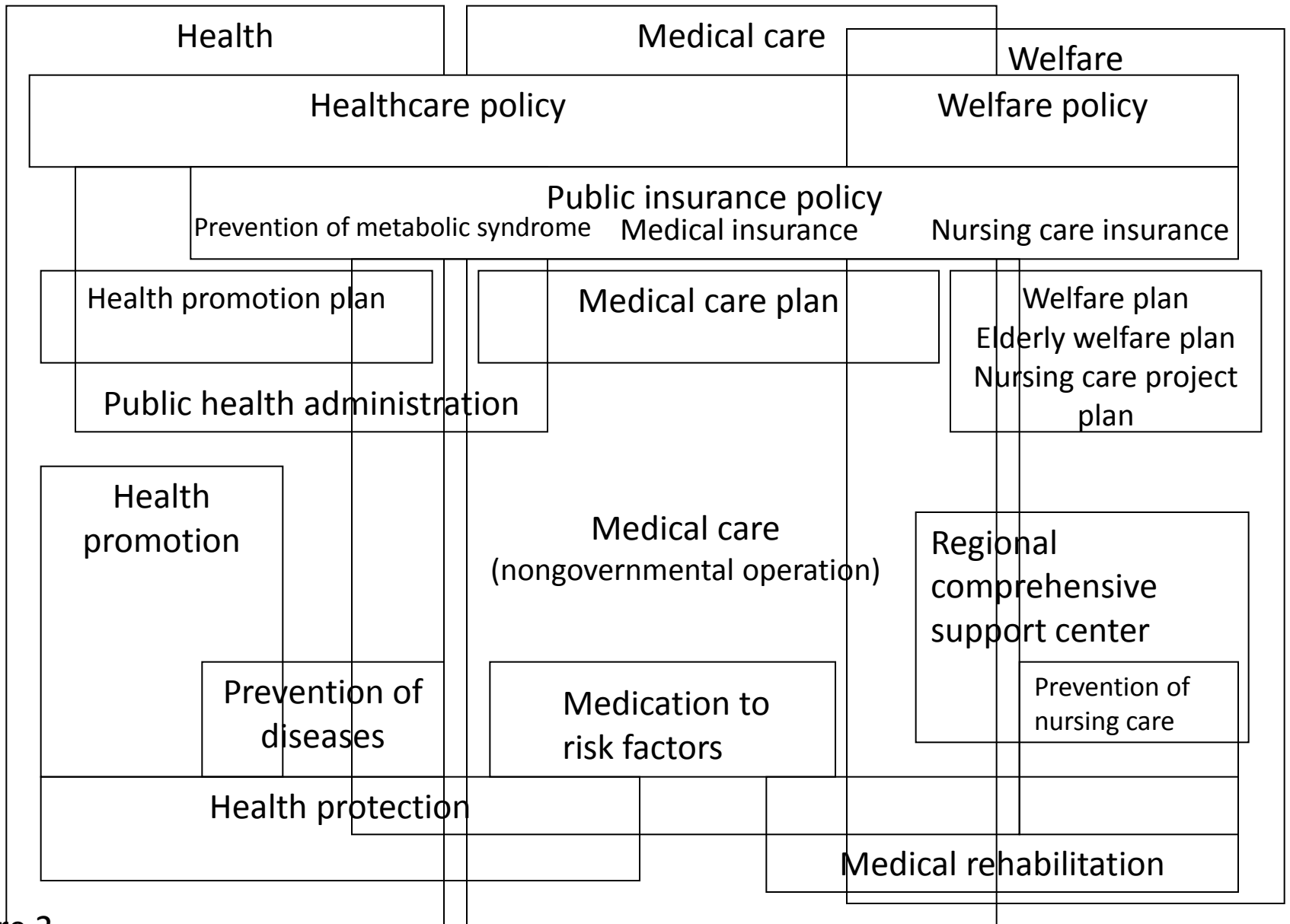


Figure 2

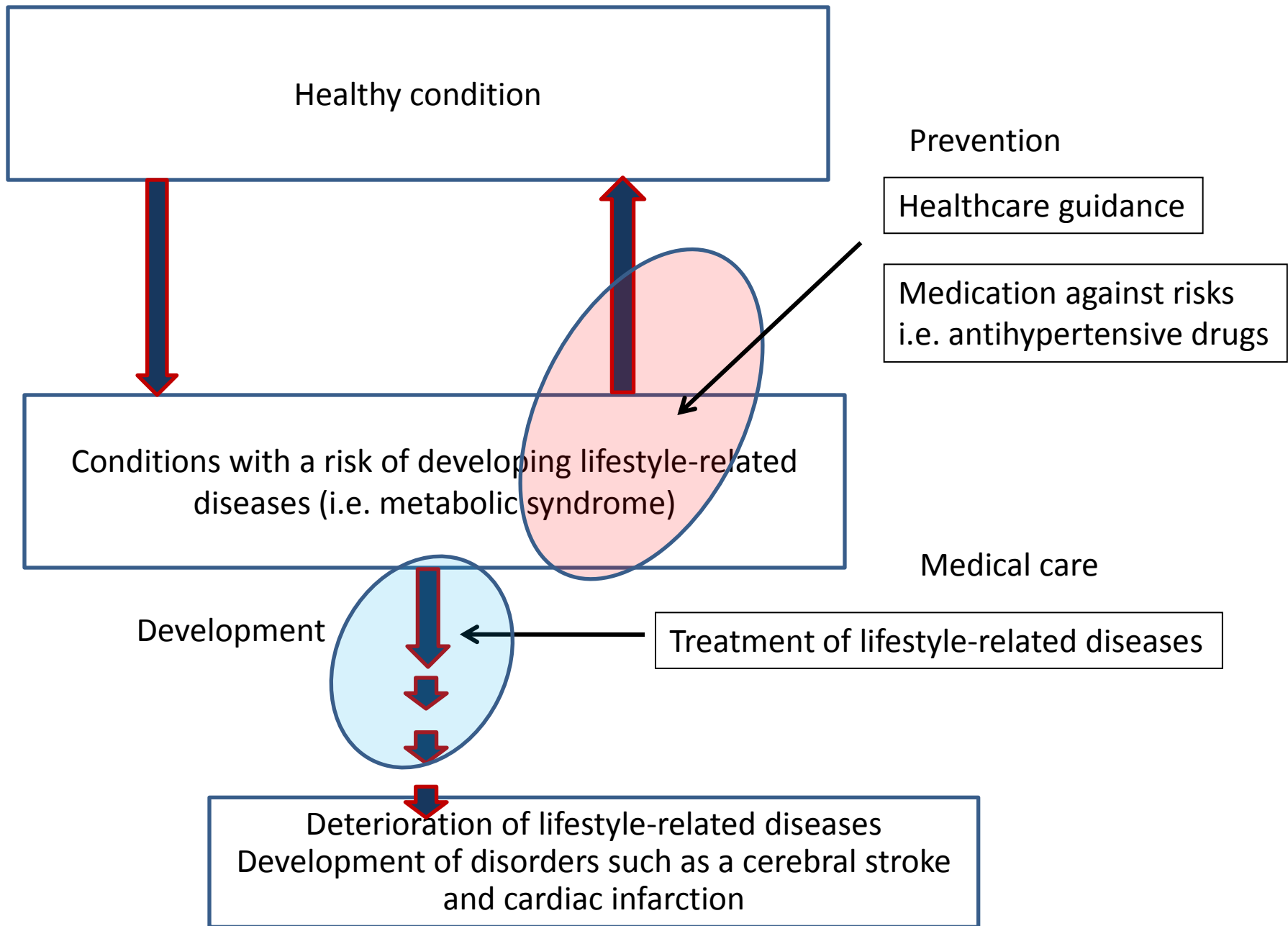


Figure 3

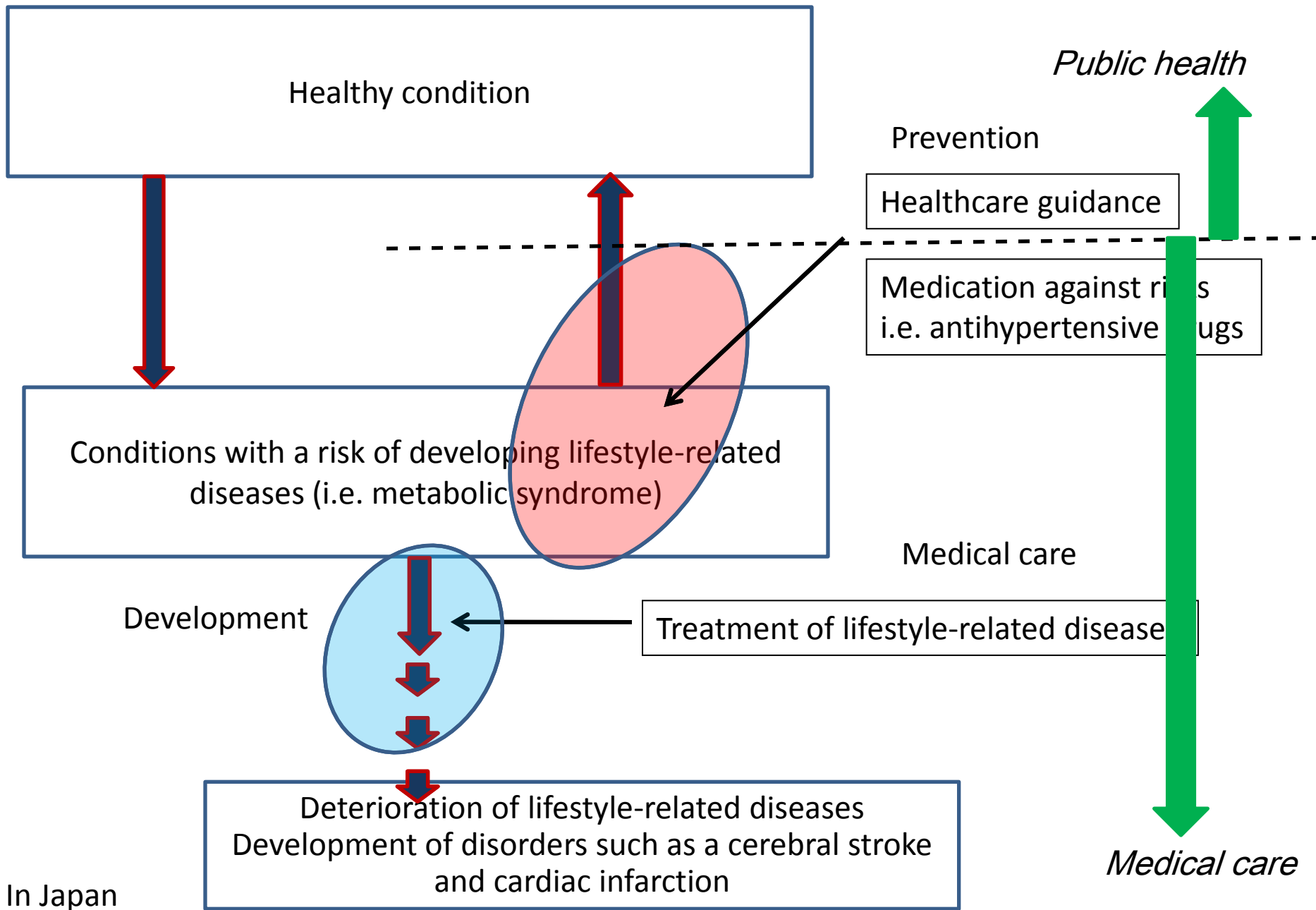


Figure 4

National government of Japan

Local governments

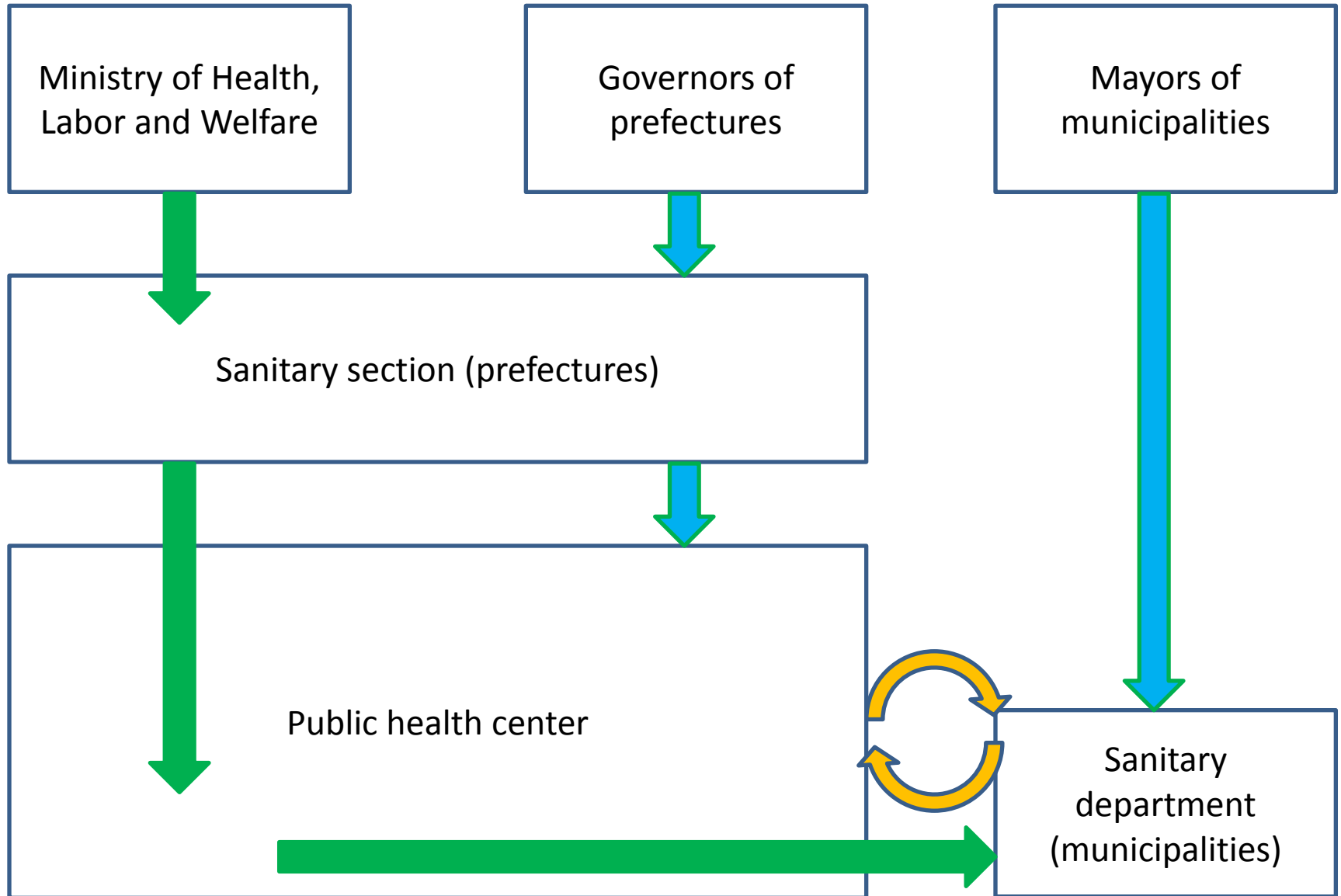


Figure 5

While the services are implemented under the Ministry of Health, Labor and Welfare from the perspective of public health, health policy in the region is implemented by the regional organization of the prefecture, in cooperation with municipalities, from the perspective of the organizational structure of the local governments.

(公衆衛生という観点では厚生労働省のラインで業務が行われておりますが、地方自治体の中の一組織という観点では、県の地方組織として、市町との協働により、地域の健康政策に取り組んでいく存在となっています)

As for the primary public health projects in this region, screening and health checkups, health education, and health guidance provided for the general public are the services implemented by municipalities.

(この地域では、一次的な公衆衛生事業について、一般公衆を対象とした健診や健康教育、生活指導は市町の業務になっています)

The Susaki Public Health and Welfare Office supports the implementation of such services.

(須崎福祉保健所はその実施のための支援を行います)

For example, it monitors and provides regional data, suggestions, and evaluations of implementation method, and offers advice on financing (subsidies and grants) and budget formulation.

(たとえば地域データのモニタリングと提供や、実施方法に対する提案、評価、資金調達(補助金、交付金)や予算編成に関するアドバイスをを行います)

In addition, although such services are implemented according to the health (promotion) plans of municipalities, the Public Health and Welfare Office cooperatives in the formulation, promotion, and evaluation of the plan.

(また、これらの事業は市町村の健康増進計画にのっとって実施されますが、計画の策定、推進、評価について協働的に参画します)

Medically-challenging services such as the handling of infectious diseases or intractable diseases, or services with high risks and the necessity of resource mediation, such as high-risk pregnancy and premature infants, are directly implemented by the public health center with the assistance of municipalities. Regular immunization is implemented by the municipalities.

(感染症や難病といった医学的難易度が高い業務や、ハイリスク妊娠、未熟児など、リスクが高く資源調整が必要な業務は保健所が直接実施し、市町がアシストする形をとります。定期的な予防接種は市町が実施します)

On the other hand, among the primary public health projects, monitoring and guidance that broadly cover the environment, including food sanitation, drinking water (water supply is the obligation of municipalities), the licensing of business categories that require attention in terms of sanitation, waste, and environmental preservation, are directly implemented by the public health center.

(一方で、primaryな公衆衛生事業ではありますが、食品衛生、飲料水(水道の供給は市町の業務)、衛生上注意が必要な業態の営業許可、廃棄物、環境保全など、広く環境を対象とした監視、指導業務は保健所が直接実施します。感染症を含め、健康危機管理の必要性が高い業務は保健所が実施します)

With regard to medical care, the Public Health and Welfare Office is working on ensuring the safety of medical care. It actually inspects medical institutes and gives them the necessary advice.

(医療に関しては、まず、医療安全の確保に対する取り組みがあり、実際に医療機関に立入を行い、必要な助言を行います。)

On the other hand, there are other main duties, such as mediation. This includes, as explained above, collaboration between medical resources and collaboration with public health administration. There are many issues, including the resolution of the uneven distribution of medical resources, suggestions for the efficient utilization of such resources, mediation related to medical collaboration, data collection on the supply/demand and usage of medical service, and collaboration between public health administration and medical care.

(もう一つには、先程から述べているような医療資源間の連携や公衆衛生行政との連携などの、調整が主要な業務を占めます。医療資源の偏在の解消あるいは効率的な活用に関する提案、医療の連携に関する調整、医療需給や利用に関するデータ収集、公衆衛生行政と医療との連携など、多くの課題があります)

These efforts are implemented in line with the Healthcare Plan and Healthcare Systems Reconstruction Plan.

※ Koban Healthcare Plan

※※ Koban Area Healthcare System Reconstruction Plan

(これらの取り組みは、保健医療計画や、医療再生計画にそって進めています)

As for reactions to disasters, the Public Health and Welfare Office supports the welfare and sanitary actions taken by the municipalities and implements services related to disaster medicine in general in the area.

(なお、災害時の対応については、市町が実施する福祉的、衛生的対応の援助、および圏域の災害医療全般に関する業務を行います)

Susaki Public Health and Welfare Office

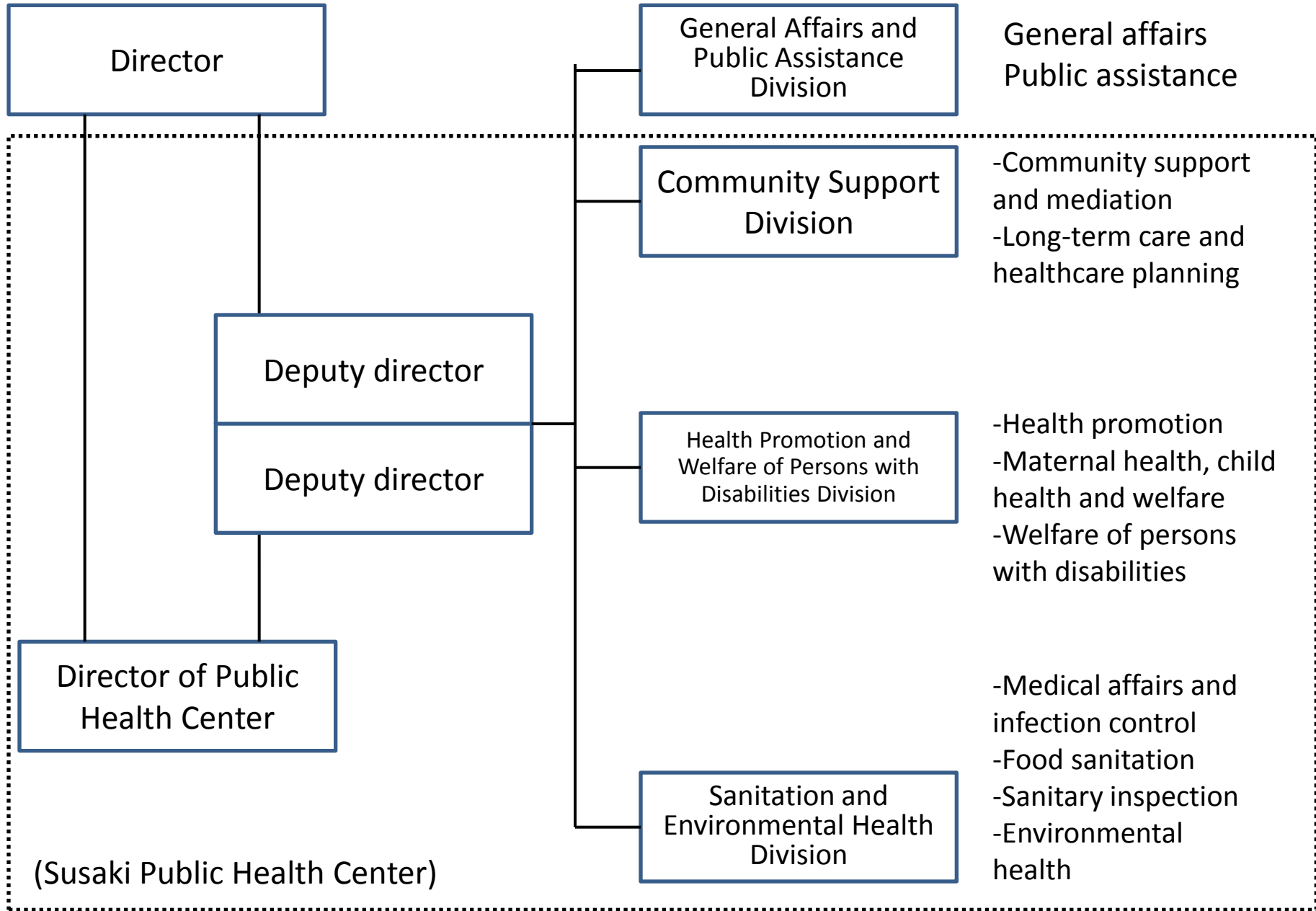


Figure 6

Community Support Division

With regard to medical care, the Public Health and Welfare Office is working on ensuring the safety of medical care. It actually inspects medical institutes and gives them the necessary advice.

(地域支援室)

圏域内の保健医療福祉の全体調整、地域福祉に関する
こと、保健医療福祉従事者の研修、衛生統計、災害の時
の市町村の福祉関係業務の支援などを行っています)

Community Support and Mediation Section

The Community Support and Mediation Section implements services related to the comprehensive mediation of healthcare and welfare within the area, services related to regional welfare, and support for the training of healthcare and welfare professionals, sanitary statistics, and the support of municipalities' welfare-related work at the time of disaster.

(地域支援部門)

圏域内の保健医療福祉の全体調整、地域福祉に関すること、保健医療福祉従事者の研修、衛生統計、災害の時の市町村の福祉関係業務の支援などを行っています)

Long-Term Care and Healthcare Planning section

The Long-Term Care and Healthcare Planning section implements the preparation, promotion and evaluation of healthcare plans, convenes the Committee of Healthcare and Welfare, and provides services for elderly healthcare.

(地域ケア部門)

保健医療計画の作成、推進、評価、保健医療福祉推進協議会の開催、高齢者保健福祉の業務を行っています)

General Affairs and Public Assistance Division

(Welfare Office)

General Affairs Section

The General Affairs Section implements services in the area of general affairs.

Public Assistance Section

The Public Assistance Section implements direct services related to the public assistance of the town, excluding Susaki City.

(総務保護課

総務・経理部門 総務部門の仕事を行っています。

生活保護部門 須崎市を除く町の生活保護に関する直接業務を行っています)

Health Promotion and Welfare of Persons with Disabilities

Division

Health Promotion Section

The Health Promotion Section implements services relating to health issues, such as health promotion, countermeasures against lifestyle-related diseases, nutrition, measures for smoking cessation, and dental health. It is also engaged in direct services, such as health checkups for atomic bomb survivors.

(健康障害課

健康増進部門

健康増進、生活習慣病対策、栄養、禁煙対策、歯科保健などの健康課題について業務を行っています。被爆者健康診断などの直接的業務もあります)

Maternal Health, Child Health and Welfare Section

The Maternal Health, Child Health and Welfare Section implements services related to maternal health, child health, and fatherless families. Services related to disabled children are also included.

(母子保健児童福祉部門)

母子保健、児童福祉、母子家庭に関する業務を行っています。
障害児に関する業務も含まれます)

Welfare of Persons with Disabilities Section

The Welfare of Persons with Disabilities Section implements services related to the health and welfare of disabled persons and intractable disease patients. It also takes administrative measures with regard to acute period hospitalization in the case of patients with deteriorating mental disorders who bear the increased risk of doing harm to themselves or other people around.

(障害保健福祉部門)

障害者や難病の保健福祉に関する業務を行っています。
また、精神疾患が悪化して本人や周囲の人へ外を加える危険性が高くなった人について、行政措置として急性期入院対応を行う業務も持っています。)

Sanitation and Environmental Health Division

Medical Affairs and Infection Control Section

The Medical Affairs and Infection Control Section implements services related to medical and pharmaceutical affairs, and services related to infectious disease countermeasures. It is also engaged in services related to health crisis management, including disaster medicine and influenza.

(衛生環境課

医事感染症部門 医事、薬事に関する業務と、感染症対策に関する業務を行っています。また、災害医療や、新型インフルエンザに代表されるような健康危機管理に関する業務を行っています)

Food Sanitation Section

The Food Sanitation Section implements services related to food sanitation and animal protection.

(食品保健部門)

食品衛生に関する業務と、動物愛護に関する業務を行っています。)

Sanitary Inspection Section

The Sanitary Inspection Section implements the inspection of foods and monitoring/instructing at water supply facilities.

(検査部門)

食品等の検査や水道施設の監視指導を行っています)

Environmental Health Section

The Environmental Health Section is engaged in the supervision, instruction, and enlightenment broadly covering the environment, such as the licensing, supervising and instructing of business categories that require attention in terms of sanitation (including hotel business), waste, and environmental preservation.

(環境部門

旅館業など衛生上注意が必要な業態の営業許可や監視指導、廃棄物、環境保全など、広く環境を対象とした監視、指導および啓発業務を行っています)

Health Planning

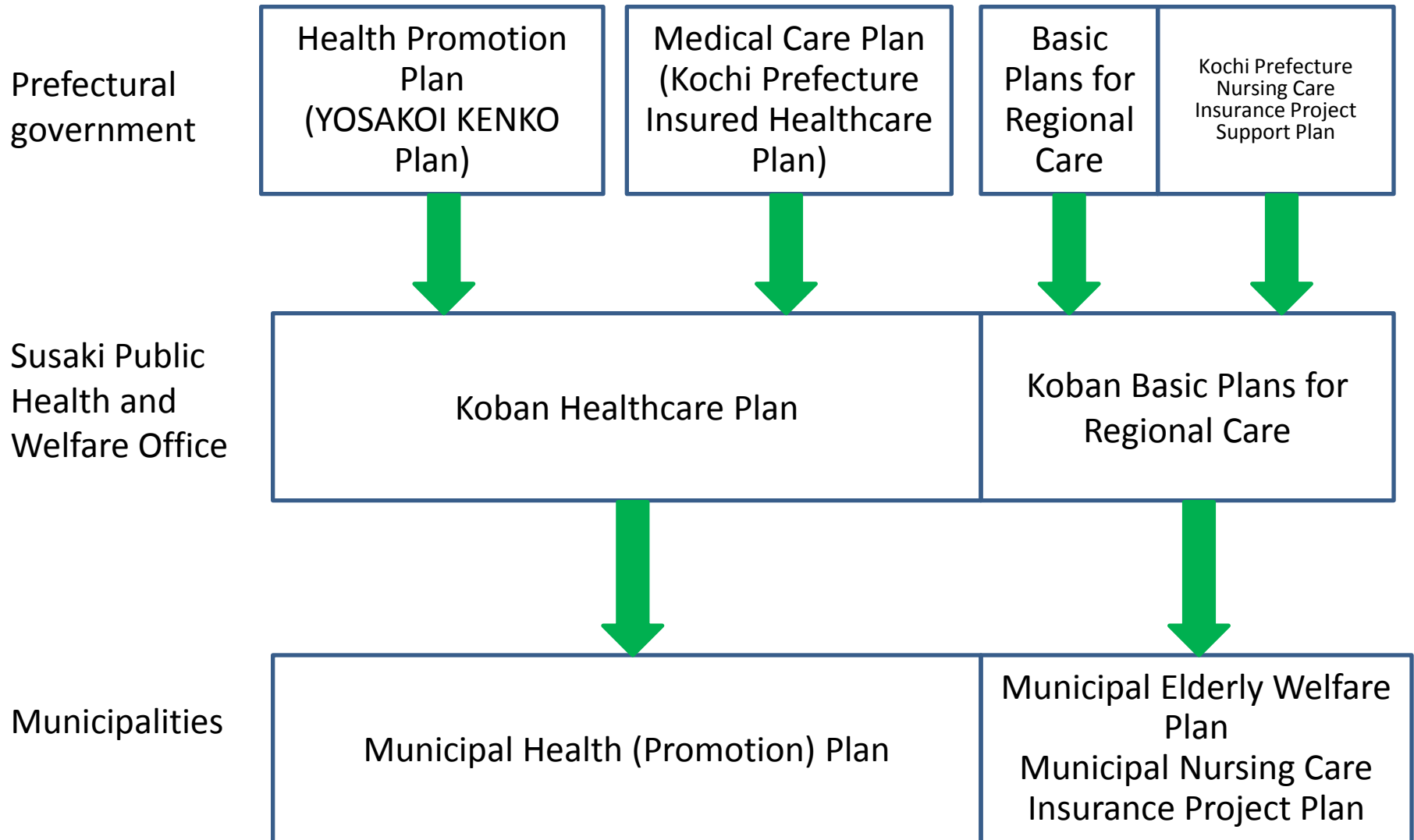
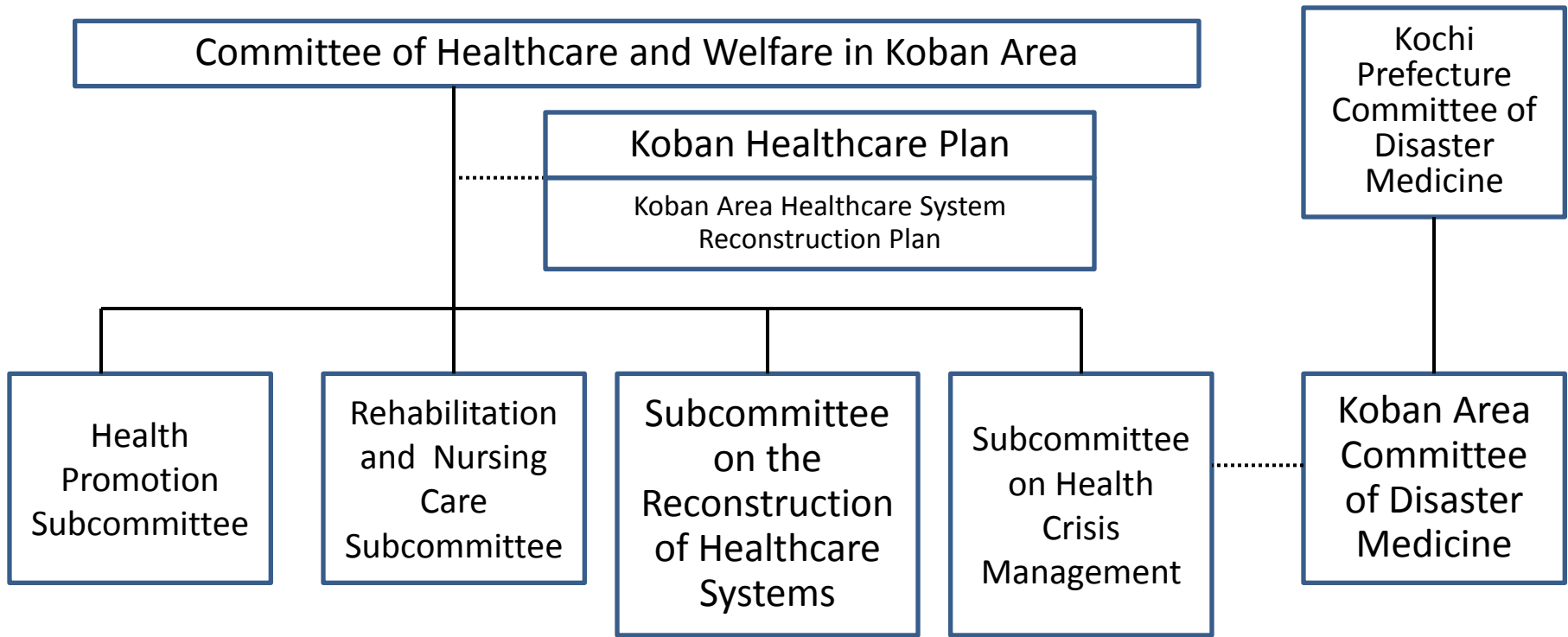


Figure 7

Healthcare Plan and Healthcare Systems Reconstruction Plan

The area is required to prepare a healthcare plan under the medical care (**Figure 7**). In order to handle the healthcare plan of the area, the Committee of Healthcare and Welfare in Koban Area was organized (**Figure 8**). This body discusses the promotion of the healthcare plan and regional health issues. The renewal of the healthcare plan is scheduled to take place after two years, and it is currently the preparation stage. It is considered that the full discussion will start from next fiscal year.

(医療法によって、圏域には保健医療計画の作成が義務づけられています(図7)。圏域の保健医療計画を扱うために、高幡地域保健医療福祉推進協議会を構成し(図8)、保健医療計画の推進や地域での健康課題に対する協議を行っています。保健医療計画の更新は2年後に予定されており、現在その準備段階にあります。来年度から本格的に協議に入っていくと思われま)



Relative conferences

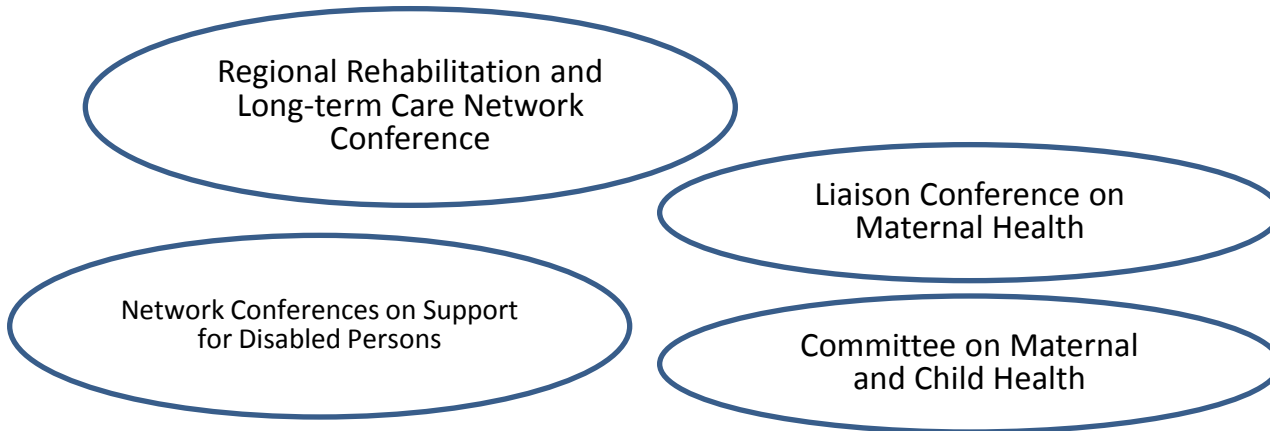


Figure 8

As part of the healthcare plan, especially with regard to urgent and prioritized issues, the Central Area and Koban Area jointly formulated the Healthcare Systems Reconstruction Plan in 2009.

Koban Area is implementing a five-year approach starting from 2009 on the prioritized issues listed below.

(保健医療計画の中で、ことに急を要し、重点的な課題について、2009年には中央圏域と高幡圏域が合同で医療再生計画を策定しています。高幡圏域については、以下の重点課題について、2009年から5年間をかけて取り組みを行っています)

A. Revival of perinatal and pediatric medical care

1. Securing perinatal and pediatric medical care resources

1) Consideration of and discussion on the ideal state of perinatal and pediatric medical care

2) Utilization of general physicians

(1) Securing personnel such as general physicians

(2) Utilization of “doctors who can provide pediatric treatment (physicians who also accept child patients)

2. Support for perinatal and pediatric medical care

1) Support for pregnant women

(1) Utilize personnel such as birthing assistants to accept high-risk parturients and provide postpartum care

(2) Securing and training birthing assistants and obstetric nurses

2) Research and study for reducing perinatal and pediatric medical risks

3. Promotion of the optimization of pediatric medical care

1) Enlightenment for proper consultation and pediatric emergency care

B. Development of emergency bases and the establishment of collaboration with medical institutes out of the area on highly acute period medical care

1. Establishment of collaboration with medical institutes out of the area on highly acute period medical care

1) Improvement of transportation systems (such as the preparation of helipad)

2) Consideration of and discussion on transportation collaboration systems

3) Utilization of medical helicopters and transportation cars

2. Securing doctors and medical bases

1) Discussion within the Committee of Healthcare and Welfare

C. Promotion of home medical care through comprehensive medical systems within the area or the establishment of collaboration

1. High-risk approach for the prevention of severe lifestyle-related diseases in terms of medical care, and follow-up thereof

2. Project to establish a system to support regional collaboration/regional transfer for promoting home medical care for the elderly, disabled children and patients of chronic diseases
 - 1) Discussion on support for regional collaboration/regional transfer for promoting home medical care
 - (1) Areas where public medical institutes mainly provide services (west)
 - (2) Areas where population is concentrated (east)
3. Collaboration between psychiatric medical care and general physical medical care
4. Improvement of access to medical care